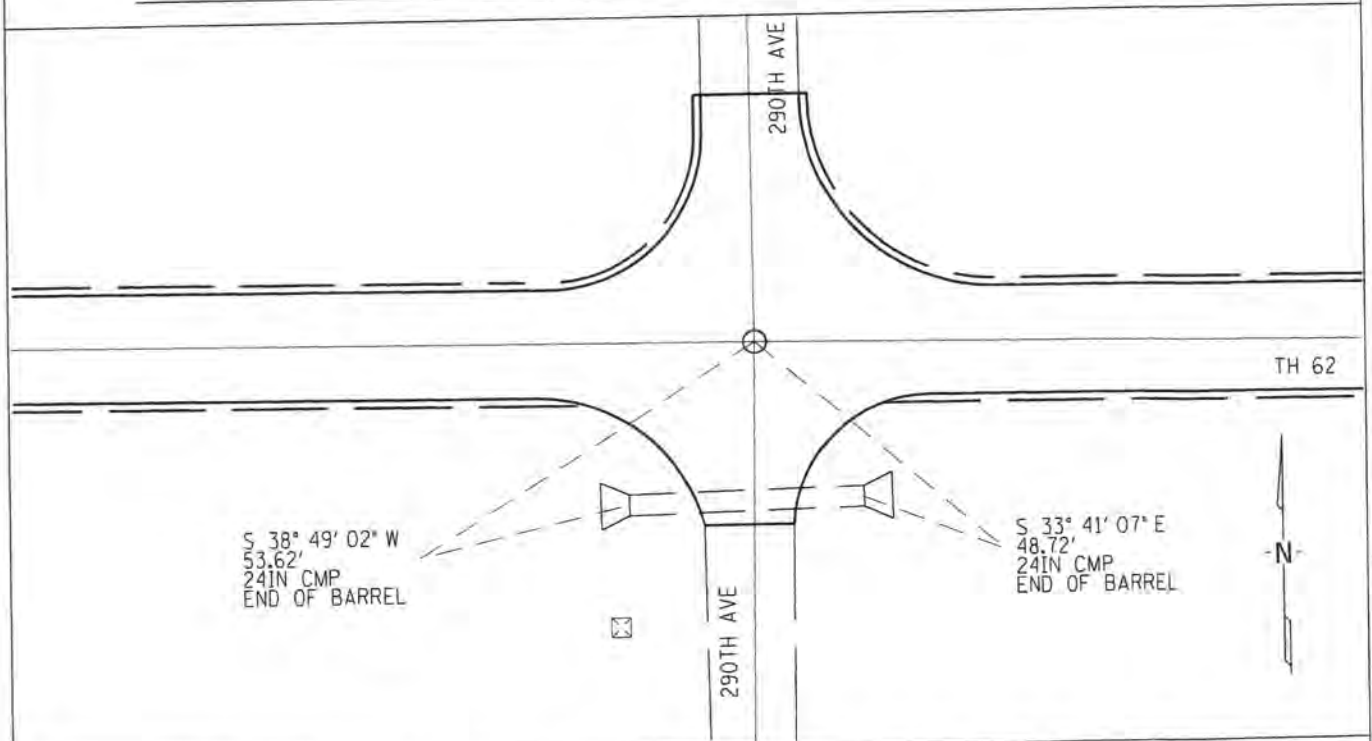


CERTIFICATE OF LOCATION OF GOVERNMENT CORNER

_____ NORTHEAST Corner of Section 35, Township 105, Range 39
 _____ Principal Meridian, State of Minnesota, County of MURRAY

At the corner location shown on the sketch:

- On _____ found a 5/8" IRON PIN WAS DESTROYED DURING CONSTRUCTION
DATE
- left monument as found lowered monument removed monument (explain)
- On 5/15/2014 placed a 1/2" X 18" IRON PIPE WITH RLS CAP 44606
DATE



Statement of evidence for this corner location is on back of this page.

I hereby certify that this survey, plan, or report was prepared by me or under my direct supervision and that I am a duly Licensed Land Surveyor under the Laws of the State of Minnesota.

Signature _____ Date _____ License No. 44606
 Title: Land Surveyor Professional Engineer County Surveyor County Engineer

Statement of Evidence: Northeast Corner of Section 35, Township 105 North, Range 39 West, 5th Principle Meridian, Murray County, Minnesota.

- 1861 This corner originally was set by D. W. Wellman and S. S. Smoot, Deputy Surveyors during the GLO survey which was completed in 1861.
- 1951 January 31, The Minnesota Department of Highways, n/k/a The Minnesota Department of Transportation (MN/DOT) Highway Right of Way Index Map No. 13-66 shows the corner being marked by a 1 inch pipe over field stone at P.O.T. 347+94.3
- 1974 August 12, an unsigned COL assumed to be from MN/DOT shows they found a ½” iron pin down 0.2’, left as found and recorded reference ties.
- 2011 In December, Sam DeLeo, LS 40341 of Kramer Leas DeLeo, P.C. found a 5/8 inch pin at the location consistent with that described above. Coordinate values were established on the monument using RTK/GPS methods as follows:
Northing 105772.59
Easting 350765.81
Murray County Coordinates.
NAD83 (2007 HARN Adj.)
- 2014 On May 15th, 2014, Kyle Klasen, LS 44606 of WSB and Associates set a ½” x 18” iron pipe capped with 44606 after the re-construction of TH 62. The coordinate value of the Corner was obtained from MnDOT, District 7 survey department and established by Mr. DeLeo in December, 2011.